

Portable, Ultralight, Affordable

The convenient partner to scan, copy and Email with the push of a button to make all your projects a success!



- Brightness and contrast controls to customize color output for specific applications
- Hi-speed USB 2.0 interface
- Includes TWAIN Driver
- Scan & send images to pre-defined destination with a single press

Speed, simplicity and advanced imaging for workgroup applications

Avision is proud to introduce its slim scanner series. The AVA5 Plus is one of slim scanner series which support document up to A5 size. Based on the innovative CIS(Contact Image Sensor) technology, the AVA5 Plus is only 1.5" in height and weights a mere 1 kg.

Despite its small footprint, the AVA5 Plus is big on resolution. With a true optical resolution of 1200 x 2400 dpi and color depth of 48-bits, the AVA5 Plus is able to reproduce image in fine detail and subtle shade.

What we have bundled

The Avision AVA5 Plus scanner comes with TWAIN driver and is also bundled with full version of exclusive Avision Button Manager and ScanSoft PaperPort 11SE.

Avision's Button Manager Lite 3

Completes your scan in a single step

Avision's state-of-the-art software application, the Button Manager, enables you to complete complex scanning task in just a single step. When the button is pressed, the scanner automatically scan your documents and convert them to BMP, JPEG, GIF, or TIFF file formats and then send the file to a designated folder, or other destination applications such as e-mail, printer, or your favorable software application. The original step-by-step procedure is replaced with only a single touch of the button.

Fit for both first-time and experienced users alike

For first-time users, Avision's Button Manager provides a true ease-of-use with the 3 pre-configured file formats and destinations for the two buttons on the scanner. For advanced users, Avision's Button Manager makes full customization possible. For example, you can change scan settings, file formats, or even add new destination software application to fit your own scanning needs.

Avision AVA5 plus Flatbed Scanner

Using the Button Manager Lite

By simply pressing the button on the scanner, the scanned document will be sent to your designated destination application. Yet, before you scan, it is recommended to check the button configurations first to ensure a proper file format and a destination application.

Checking the Button Configuration before Scanning

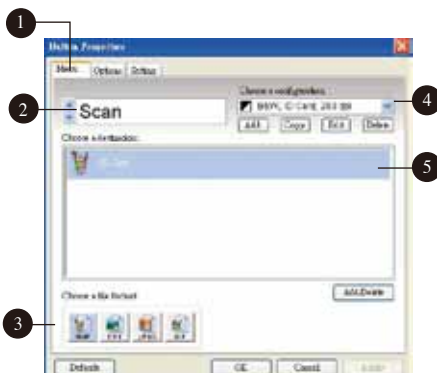
1. After the Button Manager and the scanner driver have been successfully installed on your computer, the Button Panel will be displayed in the Windows System Tray at the bottom right corner of your computer screen.



The Button Panel

2. The Button Panel shows the predefined scanning buttons. Right-click the button

(function) you wish to check, the Button Properties window appears.



- 1 Click to select options or setting.
- 2 The button name.
- 3 The file format of the scanned image.
- 4 The scan settings for the selected button.
- 5 The destination application. (This is the application that opens after you have finished scanning.)

The default setting is indicated in highlighted color. If you wish to change the setting, use this window to reset the setting for the file

format, destination application, or other scan settings.

3. Click the OK button to leave the window.

The Default Button Settings

The scanner is shipped with preconfigured button settings for your basic scanning tasks such as scan-to-folder, scan-to-email, and scan-to-printer. The following table shows these factory default settings. You can change

Button name	Destination	Default Scan Settings
E-mail	Microsoft Outlook Express	Color @100dpi, A4, BMP
Scan	Microsoft Paint	Grayscale @200dpi, A4, JPEG
Copy	Printer	B&W @300dpi, A4

Press the Button to Start Scanning

1. Press the button you wish to digitize your document.
2. Within seconds, the scanned image is captured and the destination application is opened in your computer screen.

Avision AVA5 Plus Product Specifications

Paper Feeding:	Flatbed
Scanning Technology:	Contact Image Sensor (CIS)
Document Size:	Max. 148 mm x 210mm (5.8 in x 8.3 in)
Scanning Speed:	1.8 sec.
(Color, A5, 300 dpi)	
Optical Resolution:	1200 dpi
Output Resolution:	75, 100, 150, 200, 300, 400 and 600 dpi
Output Formats:	B/W, greyscale, 24-bit color
Bundled Software:	Avision ButtonManager PaperPort 11
Interface/Drivers:	USB 2.0 / TWAIN
Power Supply:	Input: 100-240 VAC, 50/60 Hz Output: 12V, 1.25A
Power Consumption:	<30 W
Environmental Factors:	Operating temperature: 10°C to 35°C (50°F to 95°F) Operating humidity: 10% to 85%
Acoustical Noise:	Standby: <45 dB Operating: <56 dB
Dimensions (W x D x H):	275 mm x 270 mm x 38 mm (10.8 in x 10.6 in x 1.5 in)
Weight:	1.1 kg (2.4 lbs)
Recommended Daily Scanning Volume:	up to 1,000 pages

System Requirements

- Pentium 4 or higher
- Windows®XP/Vista/7
- 128MB RAM (256MB RAM for Windows XP)
- CD-ROM drive
- USB port

Contents

- AVA5 Plus scanner
- Power Supply
- USB 2.0 Cable
- CD-ROM includes:
 - Scanner Driver (TWAIN Driver)
 - Avision Button Manager
 - ScanSoft PaperPort 11 SE

